

Cymbal Line

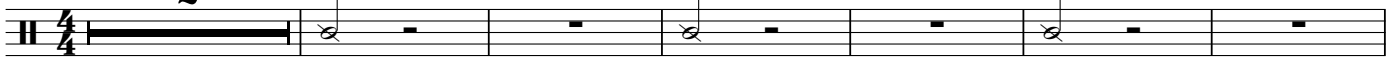
Thriller

♩=132

3

Sizzle

2



mp



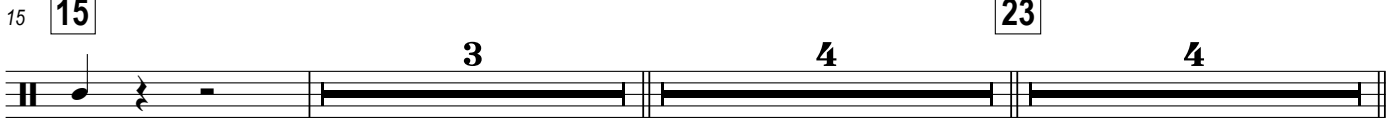
11

mf

f

ALL
f

mf



15

23

mp



27

31

ALL
f

mf

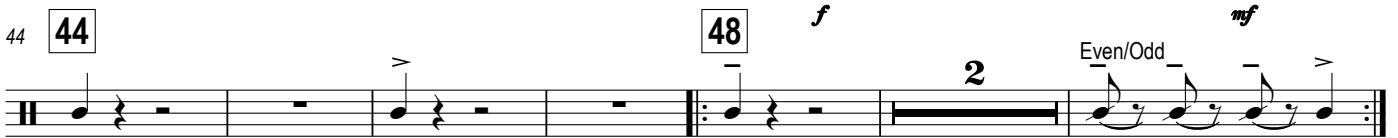


ALL
f

mf



39



44

48

f

2

Even/Odd

mf

mf

Last Time

53

mf



ALL
f

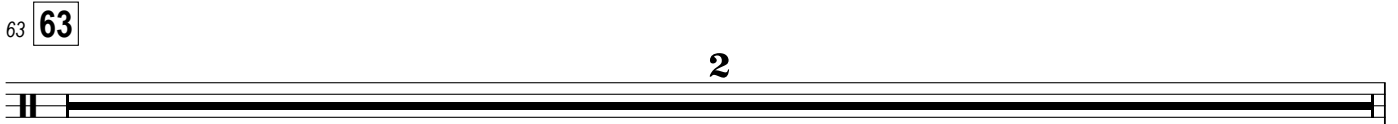
mf



ALL
f

mf

f



63

2

65

Musical notation for a single staff, measures 65-71. The notation includes a double bar line at the beginning and end. The notes are as follows:

- Measure 65: Quarter note with an accent (>), dynamic *mf*.
- Measure 66: Quarter note with an accent (>), dynamic *ff*.
- Measure 67: Quarter note with an accent (>), dynamic *ff*.
- Measure 68: Quarter note with an accent (>), dynamic *fff*.
- Measure 69: Quarter note with an accent (>), dynamic *fff*.
- Measure 70: Quarter note with an accent (>), dynamic *fff*.
- Measure 71: Quarter note with an accent (>), dynamic *fff*. This measure contains a triplet of eighth notes, indicated by a bracket with the number 3 below it. The first two notes of the triplet have accents (>), and the last two notes have accents (^).